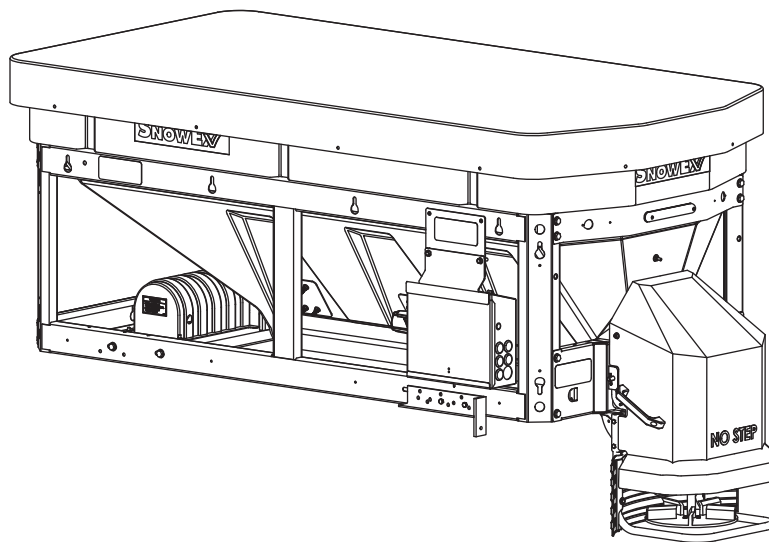




V-Maxx™ G2 Hopper Spreader

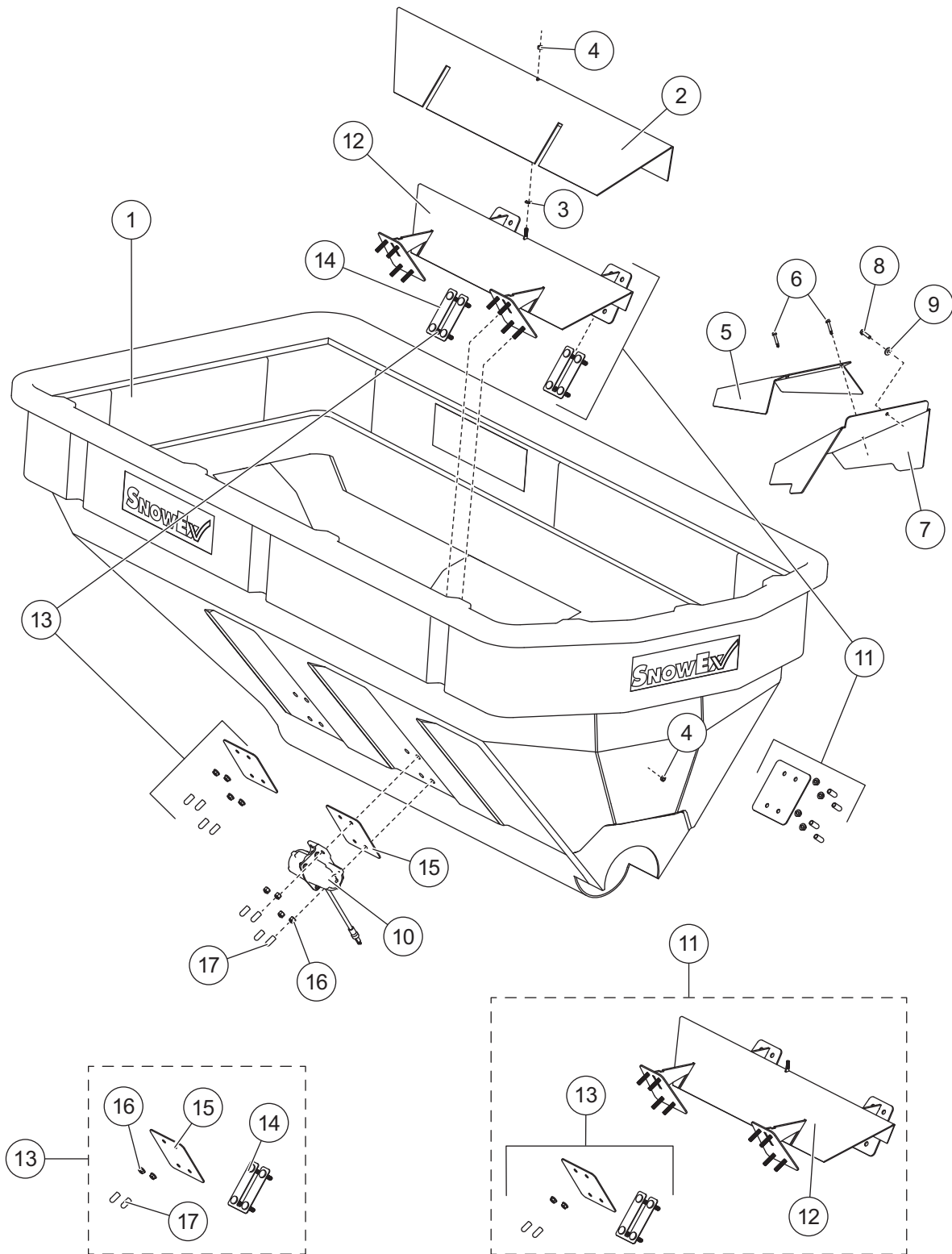
VX-2200 & VX-2200HO

Parts List



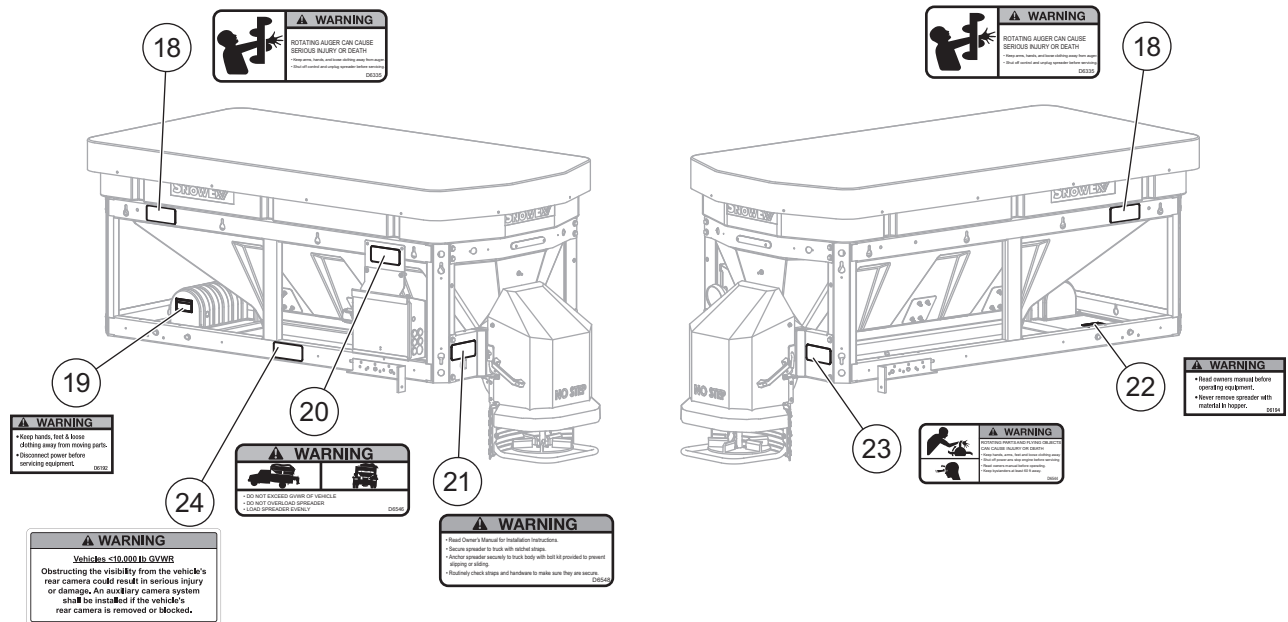
VX-2200 & VX-2200HO G2 HOPPER SPREADER

Hopper Assembly



VX-2200 & VX-2200HO G2 HOPPER SPREADER

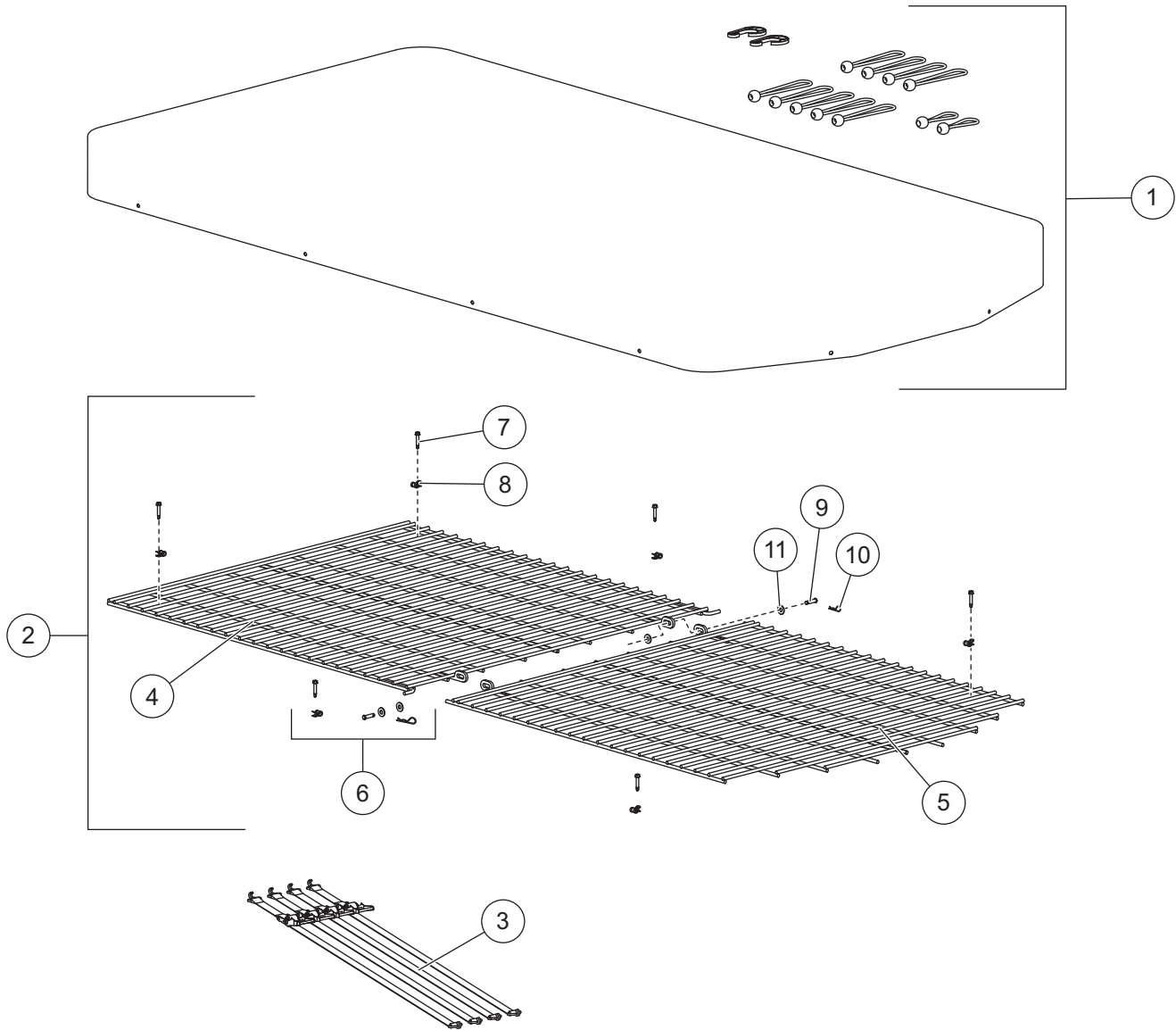
| Hopper Assembly Components | | | | | | | |
|----------------------------|-------|-----|---------------------------------|---|--------|-----|-------------------------------|
| Item | Part | Qty | Description | Item | Part | Qty | Description |
| 1 | D6800 | 1 | Hopper | 8 | D6576 | 1 | 5/16-18 x 1-1/4 Hex Cap Screw |
| 2 | D6809 | 1 | Salt Baffle | 9 | D6165 | 5 | 5/16 Flat Washer |
| 3 | D5949 | 1 | 5/16 Flat Washer SS | 10 | 75673 | 1 | Vibrator |
| 4 | D6138 | 2 | 5/16 Locknut | 11 | 99792 | 1 | Inverted V Service Kit |
| 5 | D6847 | 1 | Baffle Extension (VX-2200 only) | 12 | D6808 | 1 | Inverted V Assembly |
| 6 | D6874 | 2 | 1/4 x 1-1/2 Self-Tapping Screw | 13 | 83706 | 1 | Inverted V Mounting Hardware |
| 7 | D6807 | 1 | Discharge Baffle | | | | |
| Item 11 | | | | 99792 Inverted V Service Kit | | | |
| 12 | D6808 | 1 | Inverted V Assembly | 13 | 83706 | 1 | Inverted V Mounting Hardware |
| Item 13 | | | | 83706 Inverted V Mounting Hardware | | | |
| 14 | D6815 | 2 | Bolt Plate | 16 | D6584 | 16 | 3/8-16 Serrated Flange Nut |
| 15 | D5508 | 4 | Inverted V Backing Plate | 17 | T30820 | 16 | Stud Cover |
| SS = Stainless Steel | | | | | | | |



| Safety Labels | | | | | | | |
|----------------|-------|-----|----------------------------------|------|-------|-----|-----------------------------------|
| Item | Part | Qty | Description | Item | Part | Qty | Description |
| 18 | D6335 | 1 | Label – Warning, Rotating Auger | 22 | D6194 | 1 | Label – Warning, Before Operating |
| 19 | D6192 | 1 | Label – Warning, Hands and Feet | 23 | D6544 | 1 | Label – Warning, Rotating Parts |
| 20 | D6546 | 1 | Label – Warning, Do Not Overload | 24 | 11100 | 1 | Label – Warning, Rear Camera |
| 21 | D6548 | 1 | Label – Warning, Owner's Manual | ns | 83691 | 2 | Label – SnowEx® V-Maxx™ G2 |
| ns = not shown | | | | | | | |

VX-2200 & VX-2200HO G2 HOPPER SPREADER

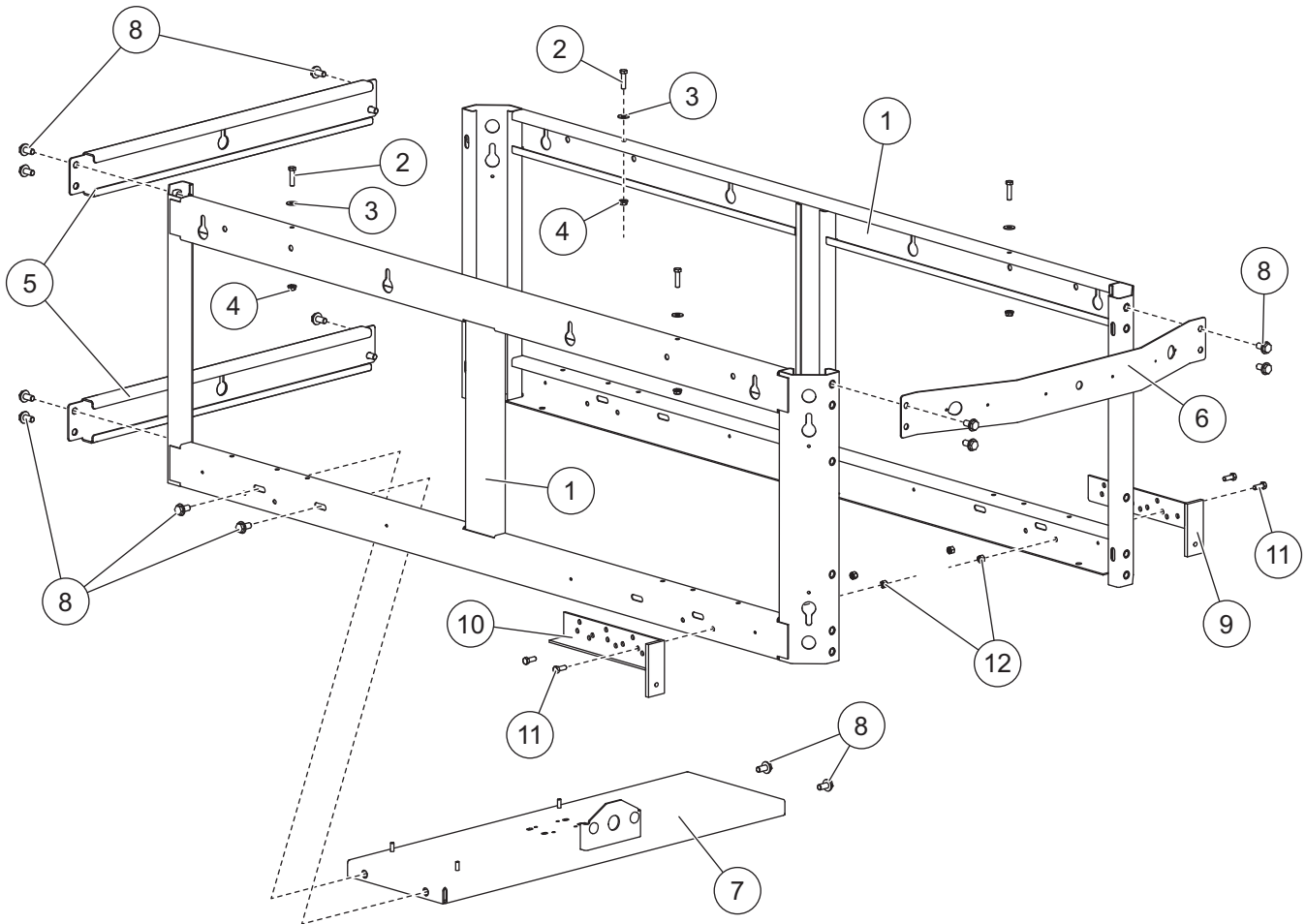
COVER, TOP SCREENS, RATCHET STRAPS



| Cover, Top Screens, Ratchet Straps | | | | | | | |
|--|-------|-----|--------------------------------|------|-------|-----|------------------------------|
| Item | Part | Qty | Description | Item | Part | Qty | Description |
| 1 | D6855 | 1 | Tarp Kit | 3 | D6856 | 1 | Ratchet Strap (pkg of 4) |
| 2 | 99791 | 1 | Top Screen Service Kit | | | | |
| Item 2 99791 Top Screen Service Kit | | | | | | | |
| 4 | D6848 | 1 | Front Top Screen | 6 | 83705 | 1 | Top Screen Mounting Hardware |
| 5 | D6849 | 1 | Rear Top Screen | | | | |
| Item 6 83705 Top Screen Mounting Hardware | | | | | | | |
| 7 | D6874 | 6 | 1/4 x 1-1/2 Self-Tapping Screw | 10 | D6853 | 2 | Hairpin Cotter |
| 8 | D6509 | 6 | Clamp | 11 | D6165 | 4 | 5/16 Flat Washer |
| 9 | D6866 | 2 | 5/16 x 1-1/4 Clevis Pin | | | | |

VX-2200 & VX-2200HO G2 HOPPER SPREADER

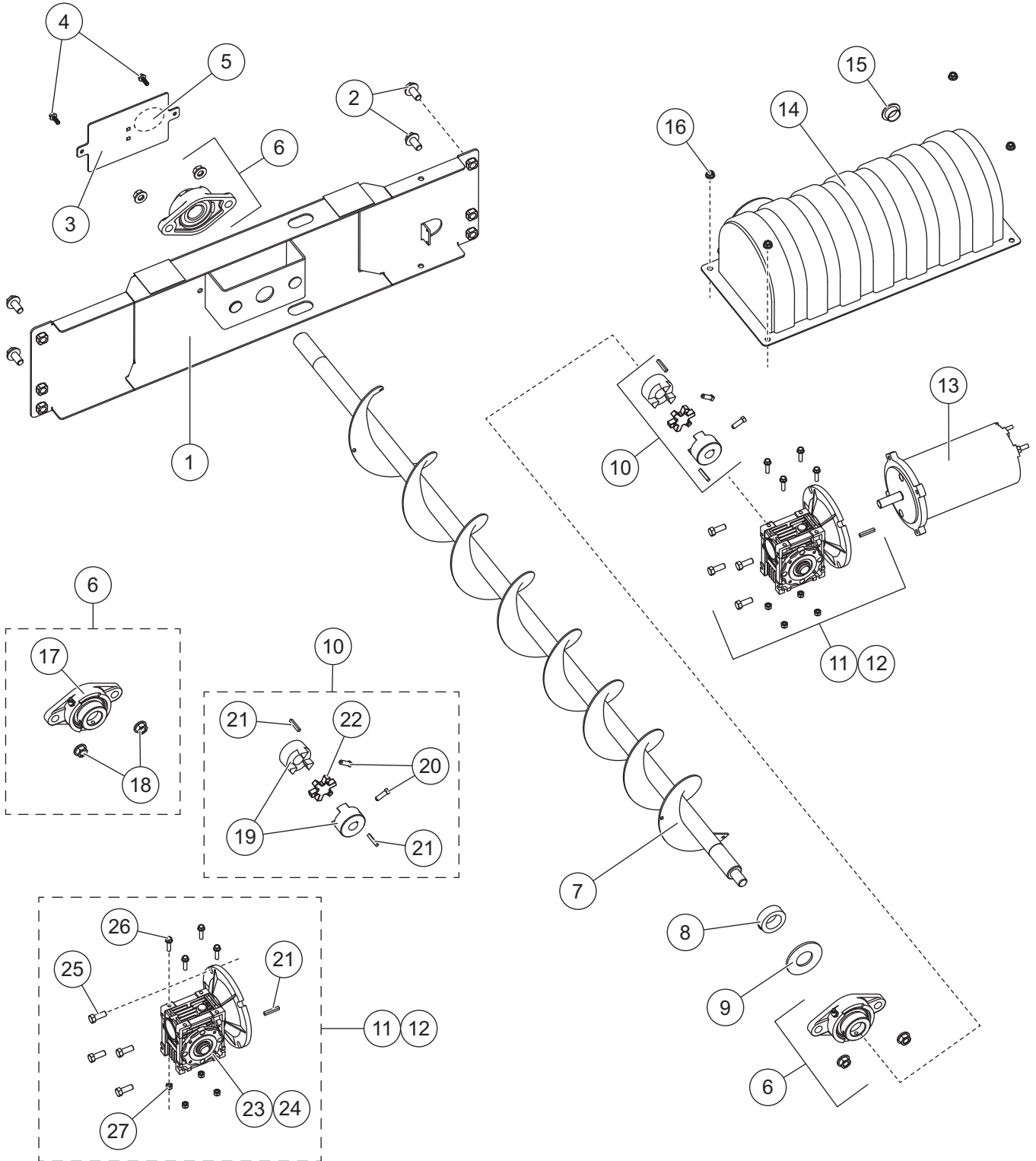
SPREADER FRAME & MOUNTING HARDWARE



| Spreader Frame & Mounting Hardware | | | | | | | |
|------------------------------------|---------|-----|------------------------------|------|-------|-----|-----------------------------------|
| Item | Part | Qty | Description | Item | Part | Qty | Description |
| 1 | D6801-1 | 2 | Side Frame | 7 | D6806 | 1 | Auger Motor Trans Support |
| 2 | D4116 | 4 | 1/2-13 x 1-1/2 Hex Cap Screw | 8 | D6528 | 16 | 1/2-13 x 1 Serrated Hex Cap Screw |
| 3 | D4119 | 4 | 1/2 Flat Washer | 9 | D6536 | 1 | Right Stop Bracket |
| 4 | D4120 | 4 | 1/2-13 Locknut | 10 | D6537 | 1 | Left Stop Bracket |
| 5 | D6804 | 2 | Upper/Lower Front Rail | 11 | D4121 | 4 | 3/8-16 x 1 Hex Cap Screw |
| 6 | D6805-1 | 1 | Rear Apron | 12 | D4124 | 4 | 3/8 Locknut |

VX-2200 & VX-2200HO G2 HOPPER SPREADER

Auger Drive Components



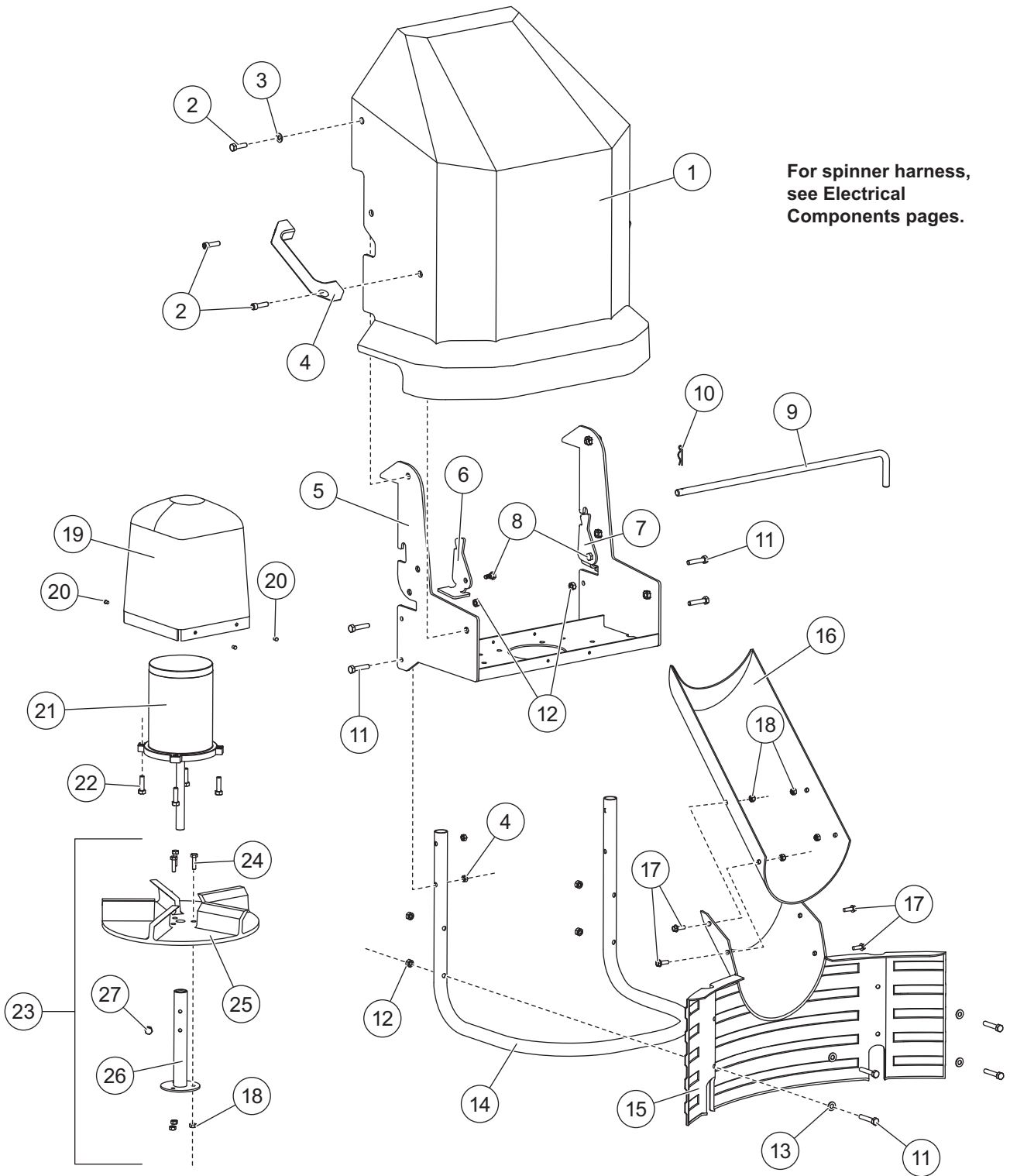
VX-2200 & VX-2200HO G2 HOPPER SPREADER

| Auger Drive Components | | | | | | | |
|-------------------------------|-------------|------------|-----------------------------------|--|-------------|------------|---|
| Item | Part | Qty | Description | Item | Part | Qty | Description |
| 1 | D6803 | 1 | Spinner Drive Mount Plate | 9 | D6789 | 1 | 1-1/4 Flat Washer |
| 2 | D6528 | 4 | 1/2-13 x 1 Serrated Hex Cap Screw | 10 | 99793 | 1 | Auger Coupler Kit |
| 3 | D6814 | 1 | Rear Bearing Cover | 11 | 99798* | 1 | Transmission Kit, VX-2200 |
| 4 | D6132 | 2 | 1/4-20 x 3/4 Hex Cap Screw | 12 | 99799 | 1 | Transmission Kit, VX-2200HO |
| 5 | D6829 | 1 | Label – Attention, Grease Fitting | 13 | D6825 | 1 | 1/2 hp Motor, 1750 RPM |
| 6 | 99794 | 2 | Auger Bearing Kit | 14 | F50957 | 1 | Auger Motor Cover |
| 7 | D6816 | 1 | 5 x 66 Auger | 15 | 99195 | 1 | Break-Thru Plug |
| 8 | D6792 | 1 | 1-5/16 Shaft Collar w/Set Screw | 16 | D5706 | 4 | 5/16-18 Serrated Flange Nut |
| Item 6 | | | | 99794 Auger Bearing Kit | | | |
| 17 | D5382 | 1 | Auger Bearing, 1-1/4 Flange | 18 | D5535 | 2 | 1/2-13 Serrated Flange Nut |
| Item 10 | | | | 99793 Auger Coupler Kit | | | |
| 19 | D6842 | 2 | Jaw-Coupling Hub | 21 | D6873 | 2 | 3/16 Key Stock |
| 20 | D7163 | 2 | 5/16-18 x 1 Set Screw | 22 | D6843 | 1 | Jaw-Coupling Spider, Urethane |
| Item 11 | | | | 99798* Transmission Kit, VX-2200 | | | |
| 21 | D6873 | 2 | 3/16 Key Stock | 26 | D6854 | 4 | 1/4-20 x 1 Serrated Flange Cap Screw SS |
| 23 | 10923 | 1 | Transmission VX-2200 | 27 | T15016 | 3 | 1/4-20 Locknut SS |
| 25 | D4121 | 4 | 3/8-16 x 1 Hex Cap Screw | | | | |
| Item 12 | | | | 99799 Transmission Kit, VX-2200HO | | | |
| 21 | D6873 | 2 | 3/16 Key Stock | 26 | D6854 | 4 | 1/4-20 x 1 Serrated Flange Cap Screw SS |
| 24 | D5341 | 1 | Transmission VX-2200HO | 27 | T15016 | 3 | 1/4-20 Locknut SS |
| 25 | D4121 | 4 | 3/8-16 x 1 Hex Cap Screw | | | | |
| SS = Stainless Steel | | | | | | | |

* If replacing an early style black transmission, also order PN 83723 Transmission Adapter Kit.

VX-2200 & VX-2200HO G2 HOPPER SPREADER

Spinner Drive Assembly

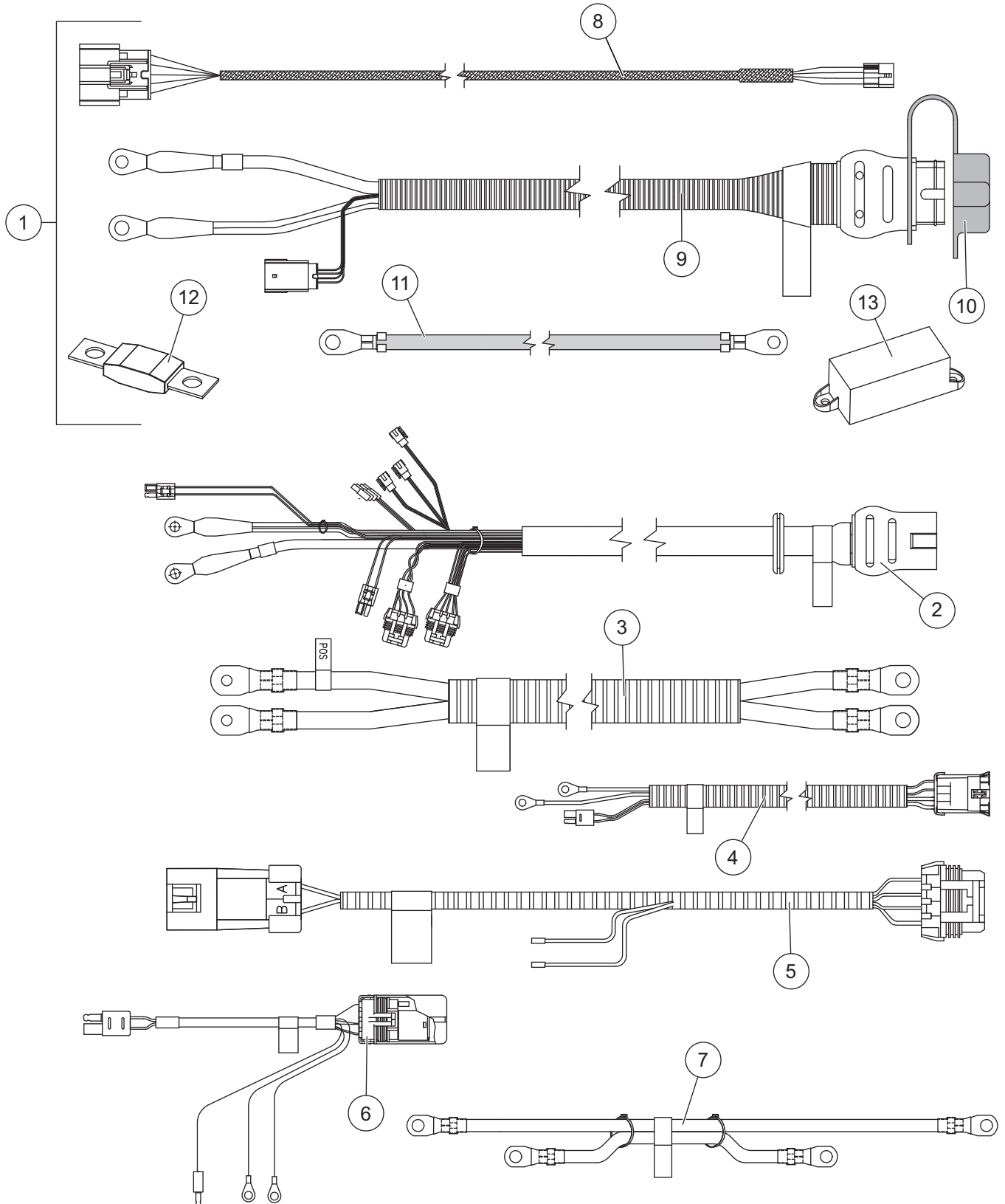


VX-2200 & VX-2200HO G2 HOPPER SPREADER

| 99796 Spinner Drive Assembly | | | | | | | |
|-------------------------------------|--------|-----|--|------------------------------|--------|-----|---------------------------------|
| Item | Part | Qty | Description | Item | Part | Qty | Description |
| 1 | D5349 | 1 | Spinner Shroud | 12 | D6138 | 8 | 5/16-18 Locknut |
| 2 | D5293 | 6 | 5/16-18 x 1-1/8 Socket-Head Cap Screw | 13 | D6165 | 4 | 5/16 Flat Washer |
| 3 | D5949 | 2 | 5/16 Flat Washer | 14 | D5347 | 1 | Tubular Spinner Guard |
| 4 | D5248 | 2 | Plastic Handle | 15 | D6833 | 1 | Plastic Deflector |
| 5 | D5344 | 1 | Spinner Drive Enclosure | 16 | D6279 | 1 | Material Chute |
| 6 | D5343 | 1 | Left-Hand Latch | 17 | D6132 | 4 | 1/4-20 x 3/4 Serrated Flange SS |
| 7 | D5342 | 1 | Right-Hand Latch | 18 | T15016 | 7 | 1/4-20 Locknut SS |
| 8 | T15038 | 2 | Shoulder Bolt | 19 | D5346 | 1 | Spinner Motor Cover |
| 9 | D6563 | 1 | 20" Drive Mounting Pin | 20 | D6333 | 4 | 3/16 Long Rivet |
| 10 | D4135 | 1 | Drive Pin Clip | 21 | D6887 | 1 | Direct Drive Spinner Motor |
| 11 | D6462 | 8 | 5/16-18 x 1-3/4 Hex Cap Screw | 22 | D6452 | 4 | 3/8-16 x 1 Serrated Flange Bolt |
| 11 | D6462 | 8 | 5/16-18 x 1-3/4 Hex Cap Screw | 23 | 99797 | 1 | Spinner Hub Kit |
| Item 23 | | | | 99797 Spinner Hub Kit | | | |
| 18 | T15016 | 3 | 1/4-20 Locknut SS | 25 | D6823 | 1 | Urethane Spinner |
| 24 | D6854 | 3 | 1/4-20 x 1 Serrated Hex Washer-Head Cap Screw SS | 26 | D6824 | 1 | Spinner Hub |
| | | | | 27 | T15049 | 1 | 5/16-18 x 1/2 Hex Cap Screw |
| SS = Stainless Steel | | | | | | | |

VX-2200 & VX-2200HO G2 HOPPER SPREADER

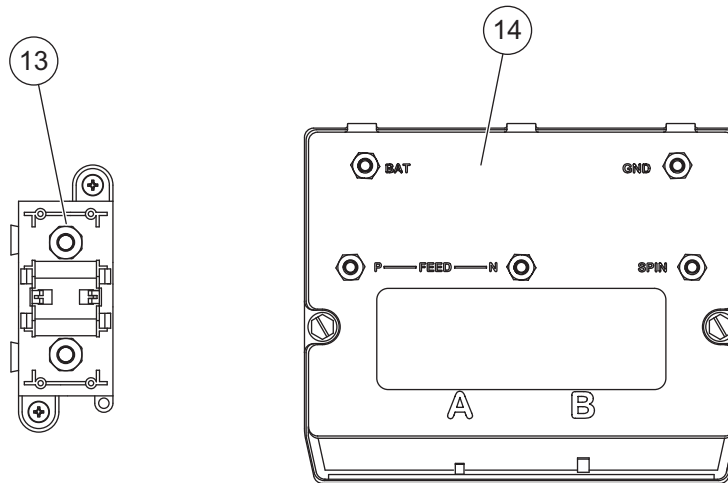
Electrical Components



Not drawn to scale.

VX-2200 & VX-2200HO G2 HOPPER SPREADER

Electrical Components



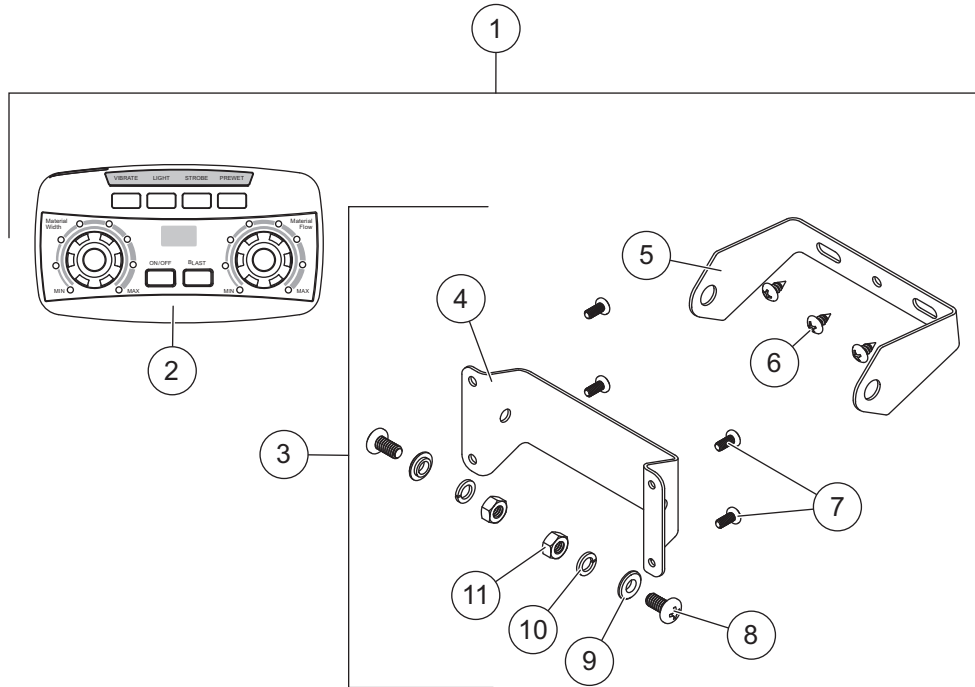
| Cables & Harnessing / Electrical Enclosure Assembly | | | | | | | |
|---|-------|-----|-----------------------------------|----------------------|--------|-----|--------------------------------------|
| Item | Part | Qty | Description | Item | Part | Qty | Description |
| 1 | 78402 | 1 | Vehicle-Side Harness Kit | 7 | 78385 | 1 | Cable Assy, Module to Isolated Stud |
| 2 | 83688 | 1 | Cable Assembly, Hopper | ns | 99775 | 1 | Cable Boot – 8-Pin |
| 3 | 83697 | 1 | Cable Assy, Module to Auger Motor | ns | 57116 | 1 | Bracket, Cable Boot |
| 4 | 78415 | 1 | Cable Assy, Spinner Motor, Hopper | ns | D6514 | 1 | Center High Mount Stop Light (CHMSL) |
| 5 | 83696 | 1 | Harness, Spinner Chute | ns | D6529* | 2 | #10-32 x 1-1/4 Machine Screw SS |
| 6 | 78382 | 1 | Vibrator Harness Assembly | ns | D6158* | 2 | #10-32 Locknut SS |
| Item 1 78402 Vehicle-Side Harness Kit | | | | | | | |
| 8 | 69902 | 1 | Vehicle Control Harness | 12 | 95836 | 1 | Fuse, 100A |
| 9 | 76057 | 1 | Vehicle Harness Assembly** | 13 | 95837 | 2 | Fuse Holder/Isolated Stud Block |
| 10 | 99759 | 1 | Plug Cover | ns | | 6 | Cable Tie, HD |
| 11 | 22511 | 1 | 22" Battery Cable – Red | ns | | 10 | Cable Tie, 15.35" |
| Electrical Box Components | | | | | | | |
| 13 | 95837 | 1 | Fuse Holder/Isolated Stud Block | 14 | 52375 | 1 | Spreader Module, 5-Post |
| ns = not shown | | | | SS = Stainless Steel | | | |

* CHMSL Mounting Hardware.

** Plug cover included.

VX-2200 & VX-2200HO G2 HOPPER SPREADER

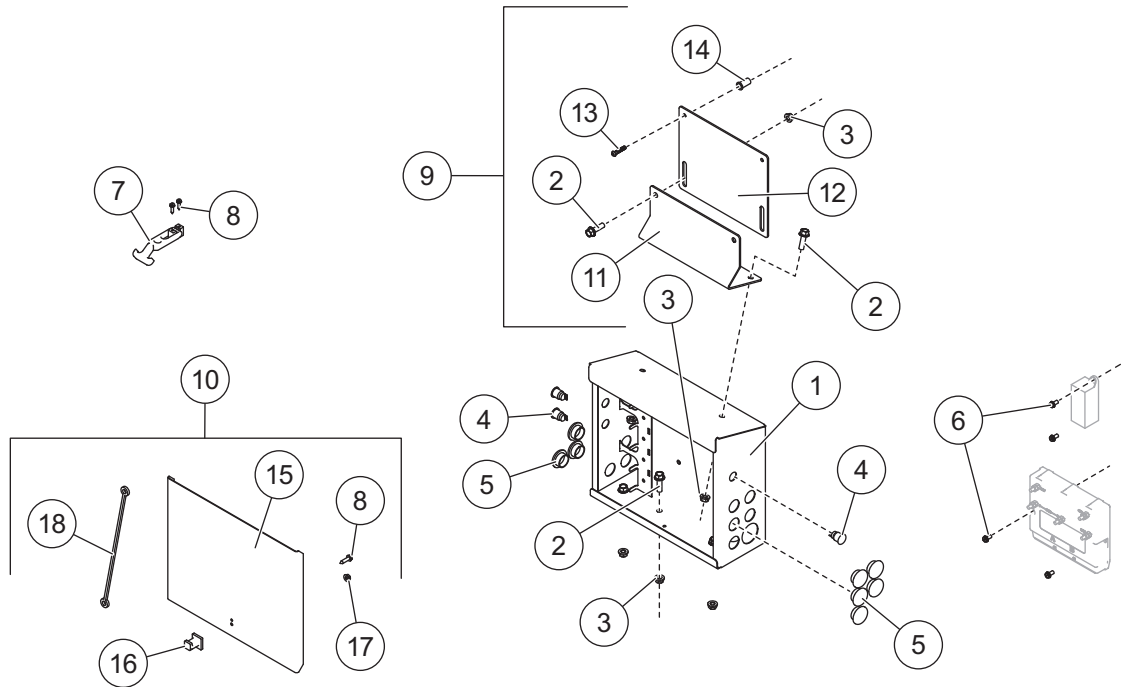
Cab Control



| Cab Control | | | | | | | |
|----------------------|-------|-----|-------------------------------------|--------------------------------------|-------|-----|--|
| Item | Part | Qty | Description | Item | Part | Qty | Description |
| 1 | 52430 | 1 | Cab Control Kit | | | | |
| Item 1 | | | | 52430 Cab Control Kit | | | |
| 2 | 52432 | 1 | Cab Control, 2-Knob | 3 | 52345 | 1 | Cab Control Bracket Kit |
| Item 3 | | | | 52345 Cab Control Bracket Kit | | | |
| 4 | | 1 | Control Bracket, Inner | 8 | | 2 | 1/4-20 x 1/2 Pan-Head Machine Screw SS – Black |
| 5 | | 1 | Control Bracket, Outer | 9 | | 2 | 1/4 Shoulder Washer SS – Black |
| 6 | | 3 | #10 x 3/8 Pan-Head Tapping Screw SS | 10 | | 2 | 1/4 Lock Washer SS |
| 7 | | 4 | #8 x 3/8 Pan-Head Machine Screw | 11 | | 2 | 1/4-20 Hex Nut G5 – Black |
| SS = Stainless Steel | | | | G = Grade | | | |

VX-2200 & VX-2200HO G2 HOPPER SPREADER

Electrical Box Assembly



| 99789 Electrical Box Assembly | | | | | | | |
|-------------------------------|-------|-----|---|----------------------|-------|-----------|-------------------------------------|
| Item | Part | Qty | Description | Item | Part | Qty | Description |
| 1 | | 1 | Electrical Box | 7 | D6105 | 1 | Flexible Draw Latch |
| 2 | 83641 | 7 | 3/8-16 x 1-1/4 Serrated Flange Screw G5 | 8 | D6553 | 3 | #10 x 3/4 Washer-Head Slotted Screw |
| 3 | D6584 | 7 | 3/8-16 Serrated Flange Nut | 9 | 83702 | 1 | Bracket Kit |
| 4 | 99254 | 3 | Switch, Push Button, MO | 10 | 57016 | 1 | Cover Assembly |
| 5 | 99195 | 9 | Break-Thru Plug | ns | 83698 | 1 | Label Kit – Electrical Box |
| 6 | 78436 | 4 | 1/4-20 x 1/2 Washer-Head Machine Screw SS | | | | |
| Item 9 | | | | 83702 Bracket Kit | | | |
| 2 | 83641 | 4 | 3/8-16 x 1-1/4 Serrated Flange Screw G5 | 12 | | 1 | Top Support Bracket |
| 3 | D6584 | 4 | 3/8-16 Serrated Flange Nut | 13 | 57966 | 2 | 1/4-20 x 1-1/4 Hex Cap Screw SS |
| 11 | | 1 | Bottom Support Bracket | 14 | 78263 | 2 | 1/4-20 Well Nut |
| Item 10 | | | | 57016 Cover Assembly | | | |
| 8 | D6553 | 2 | #10 x 3/4 Washer-Head Slotted Screw | 16 | D6198 | 1 | Latch Keeper |
| 15 | 57014 | 1 | Cover | 17 | 88300 | 1 | 1/4-20 Serrated Flange Nut |
| | | | | 18 | 43554 | 1 | 12" Lanyard Loop |
| SS = Stainless Steel | | | ns = not shown | | | G = Grade | |



TrynEx International
531 Ajax Drive
Madison Heights, MI 48071-2429
www.snowexproducts.com

 A DIVISION OF DOUGLAS DYNAMICS, LLC

Copyright © 2018 Douglas Dynamics, LLC. All rights reserved. This material may not be reproduced or copied, in whole or in part, in any printed, mechanical, electronic, film, or other distribution and storage media, without the written consent of TrynEx International, LLC. Authorization to photocopy items for internal or personal use by TrynEx International outlets or spreader owner is granted.

TrynEx International reserves the right under its product improvement policy to change construction or design details and furnish equipment when so altered without reference to illustrations or specifications used. TrynEx International or the vehicle manufacturer may require or recommend optional equipment for spreaders. Do not exceed vehicle ratings with a spreader. TrynEx International offers a limited warranty for all spreaders and accessories. See separately printed page for this important information. The following are registered (®) or unregistered (™) trademarks of Douglas Dynamics, LLC: SnowEx®, V-Maxx™.

Printed in U.S.A.